



# Sensitization to Dermatophagoides pteronyssinus, Dermatophagoides farinae in Algerian allergic patients by in vitro specific IgE

Dr. Ouadi Ibtissem<sup>1</sup>,  
Pr. S. Gadiri-Meriché<sup>1</sup>

<sup>1</sup> Faculty of Medicine, Badji Mokhtar University, Laboratory of Medical Immunology, Saint-theres teaching hospital, Annaba, Algeria.

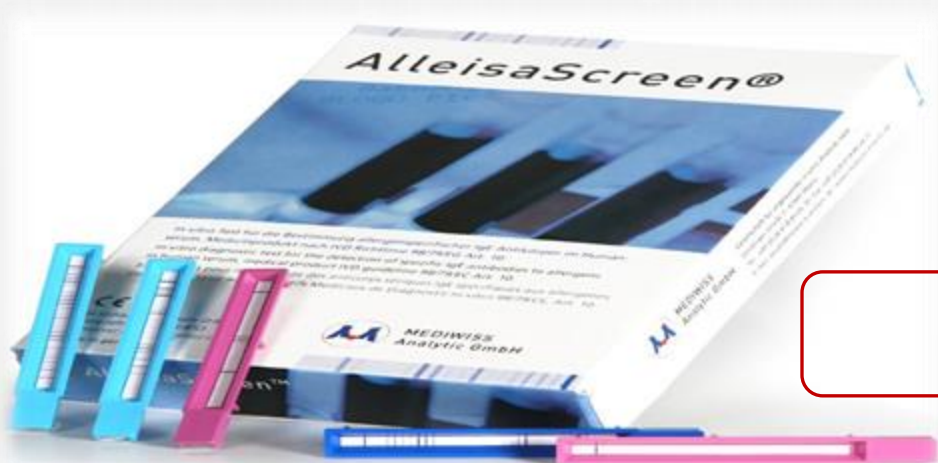
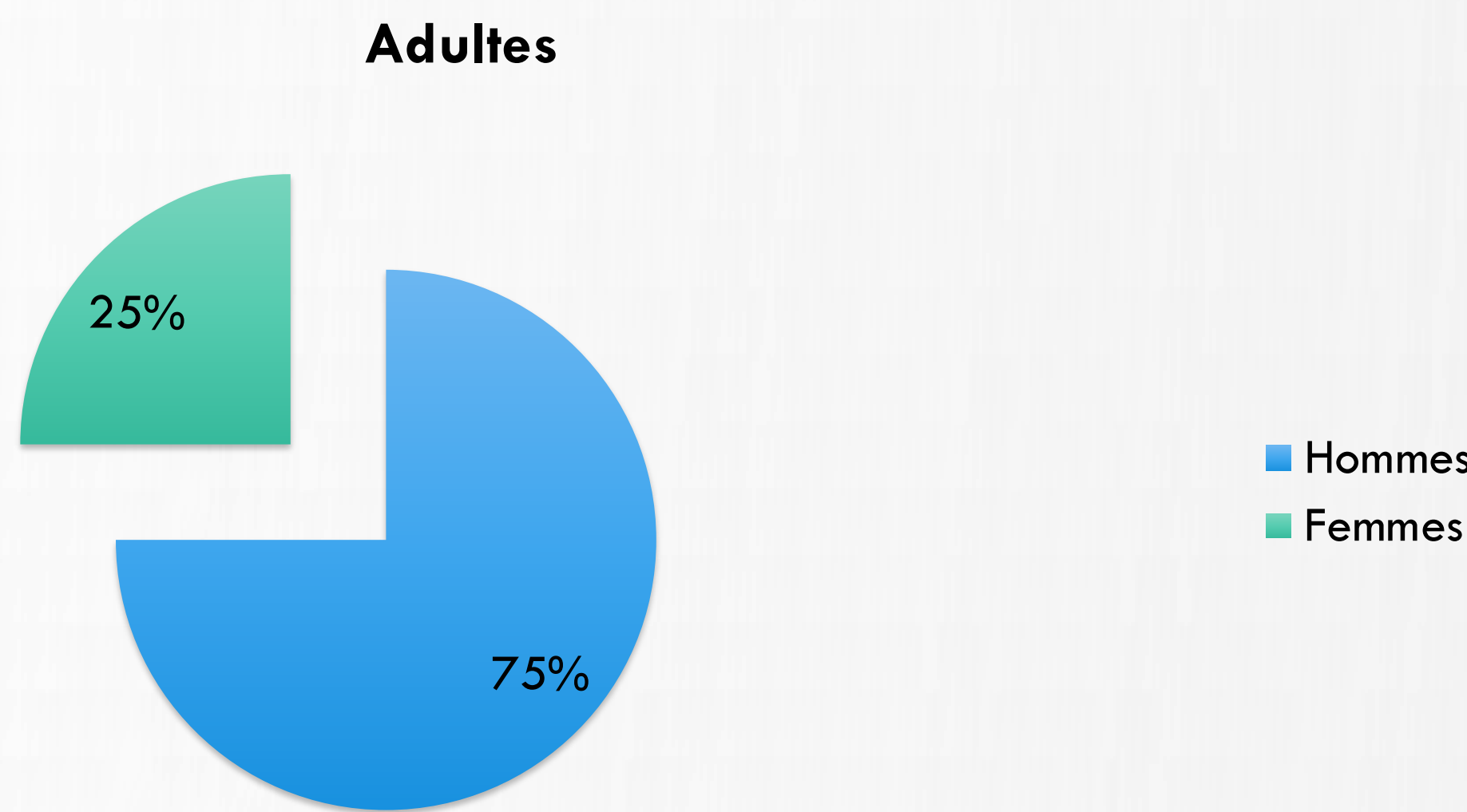
## I-INTRODUCTION

- House dust mite allergy is a significant risk factor for asthma in many countries. However, awareness of the condition remains generally low.
- Identifying HDM allergy as the underlying cause of respiratory allergic disease is an important step in managing clinical control of symptoms, as well as potentially preventing disease progression
- Although many different species of HDM have been reported to occur in indoor environments, *Dermatophagoides pteronyssinus* and *Dermatophagoides farinae* are the prime species associated with the development of D pteronyssinus IgE sensitization
- Our objective was to determine sensitization to two house dust mites in allergic patients living in Annaba city (Algeria)



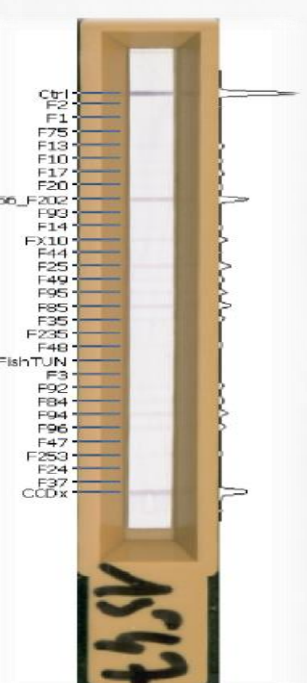
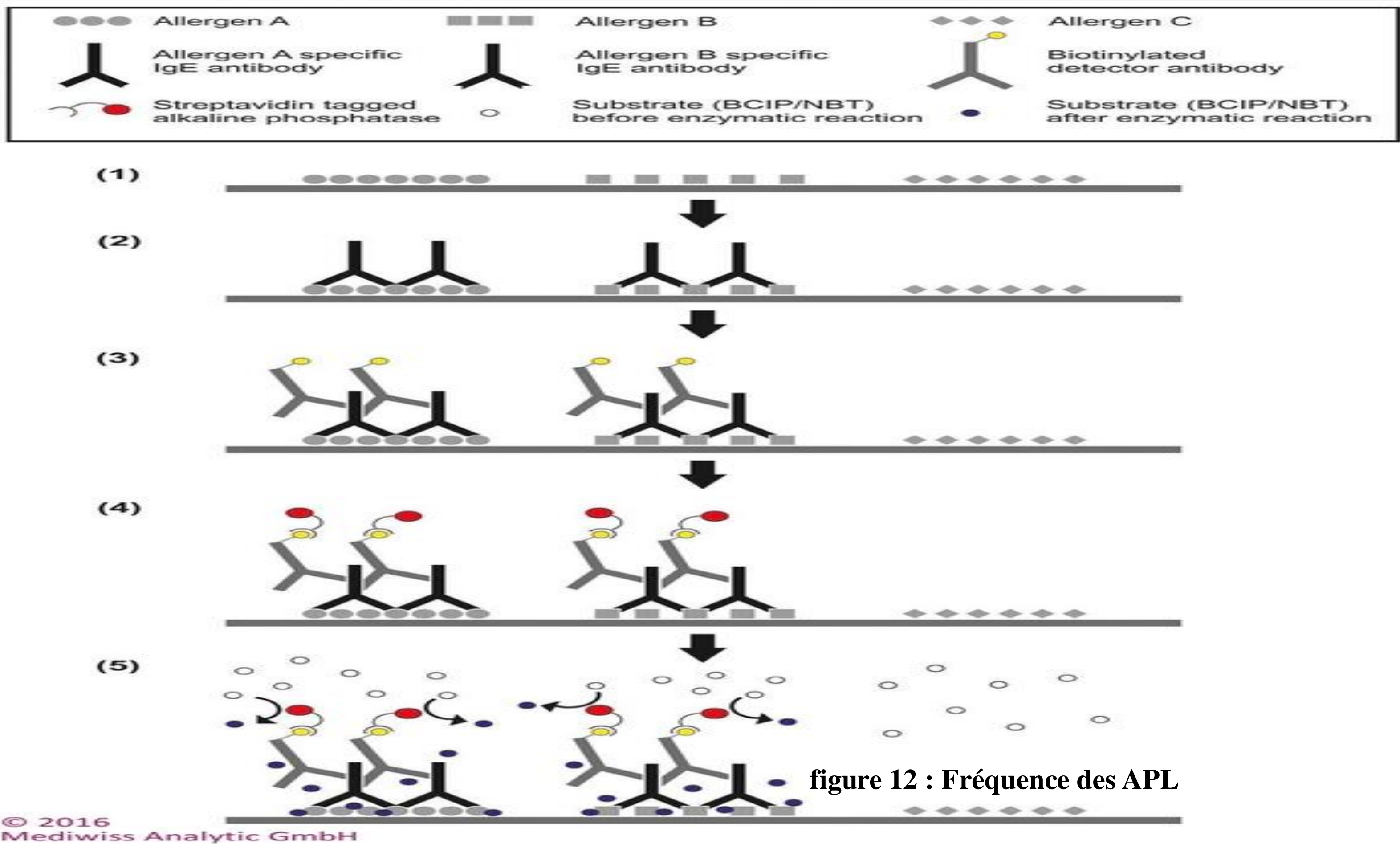
## II-MATERIELS ET METHODES

- Retrospective study. **232 adult patients** with respiratory allergic diseases .
- Males represented **75 %** , females were **25%**. Mean age was **40 years**, ranging from **18 to 75 years** .
- Quantitative specific IgE (serum) using a enzyme allergeo-sorbent test (*MEDIWISS AlleisaScreen®*).



### Panel 30 Resp MAG

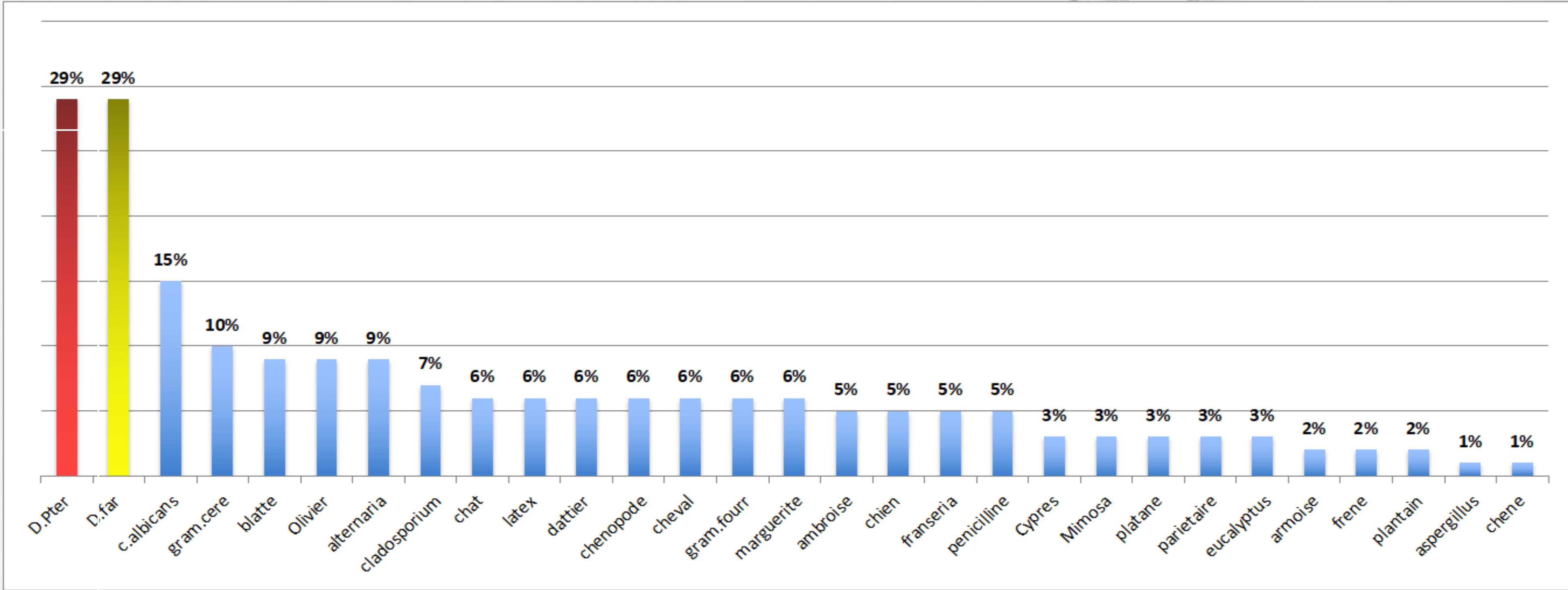
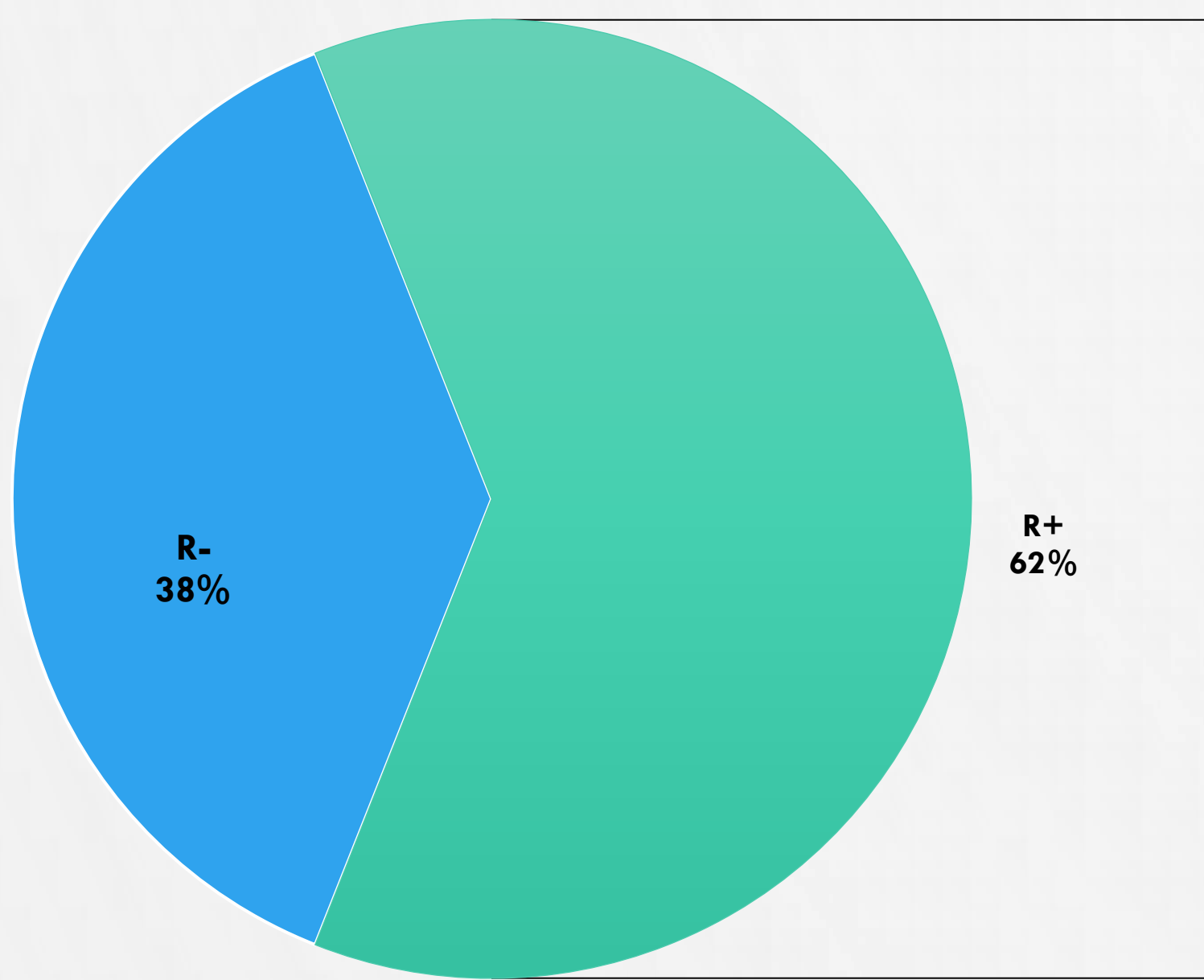
Contrôle  
Derm. pteronyssinus (d1)  
Derm. farinae (d2)  
Cypres (t23)  
Olivier (t9)  
Mimosa (t19)  
Eucalyptus (t18)  
Dattier (t214)  
Frêne (t15)  
Chêne (t7)  
Platane (t11)  
Graminées fourragères (gx7)  
Graminées céréalières (gcerTUN)  
Pariétaire (w21)  
Armoise (w6)  
Ambroise (w1)  
Franseria acanthicarpa (w3)  
Plantain (w9)  
Chenopode (w10)  
Marguerite (w7)  
Aspergillus fumigatus (m3)  
Alternaria alternata (m6)  
Cladosporium herbarum (m2)  
Candida albicans (m5)  
Penicillium notatum (m1)  
Chat (e1)  
Chien (e5)  
Cheval (e3)  
Latex (k82)  
Blatte (i6)  
Mélange de CCD (CCDx)



KU	classe	Contenu en IgE spécifique
≤ 0.35 iU/ml	0	négatif
0.35 – 0.69 iU/ml	1	bas
0.7 – 3.4 iU/ml	2	élevé
3.5 – 17.4 iU/ml	3	clairement élevé
17.5 – 49.9 iU/ml	4	haut
50 – 100 iU/ml	5	très haut
> 100 iU/ml	6	extrêmement haut

## III-RESULTS

- Frequency of R+ to inhalant allergens was **62%**. The frequency of R+ to house dust mites were: D. pteronyssinus = **29%** , D. farinae = **29%** .



## IV-CONCLUSION

There is a predominant frequency of sensitization to house dust mites in the evaluated patients.

There is no difference of Sensitization between D. farinae and D. pteronyssinus

For the majority of patients, the sensitization to the evaluated of HDM is specific. For some patients, the sensitization is not specific.